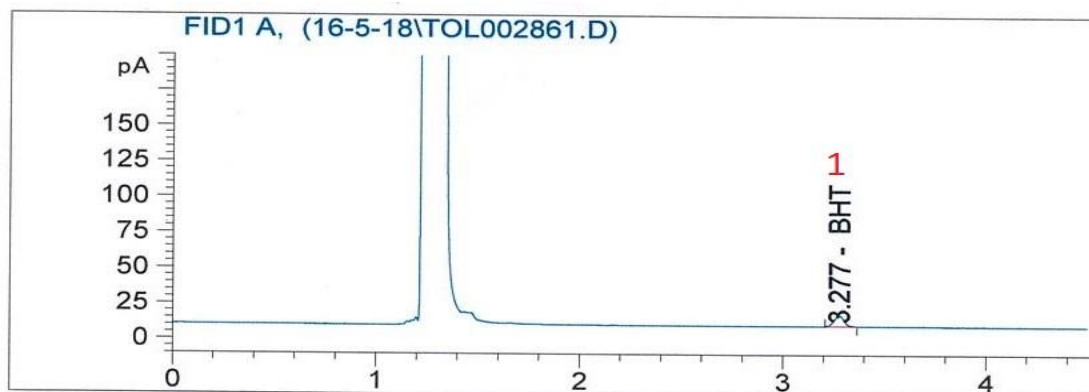


# GC Analysis antioxidant butylated hydroxytoluene (BHT)

## Using UCS1000 Direct Injection



### Application Conditions

GC Model	Sion G4210N
Hydrogen Generator	Sion H-300
UCS	Sion UCS1000
Air Generator	Sion A-100
Column	Quadrex 007-1 30m x 530µm x 3.0 µm
Oven	230 °C (4.5 min)
Carrier gas	Hydrogen, 42 cm/sec @ 230°C constant flow
Sample	1 analytes, at Dibromomethane
Injection	1 µL, 5:1 split mode
liner	Focus Liner
Injector. temp.	260 °C
Detector t.	FID, 280 °C, H2-30ml/min, Air- 300ml/min, Make Up – Air 30ml/min

### Analyte

1. BHT - 5ppm.