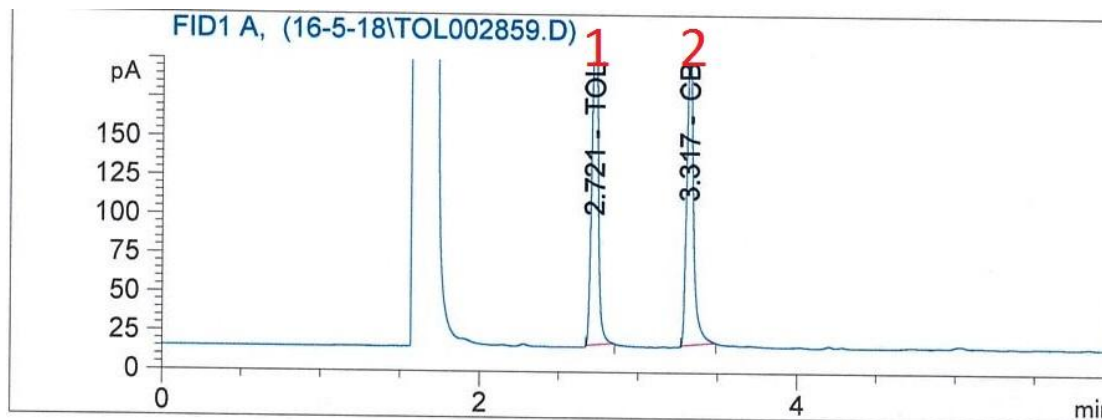


GC Analysis of Residual Solvents Using UCS1000 Direct Injection



Application Conditions

GC Model	Sion G4210N
Hydrogen Generator	Sion H-300
UCS	Sion UCS1000
Air Generator	Sion A-100
Column	Quadrex 007-1 30m x 530µm x 3.0 µm
Oven	120 °C (2 min), 20 °C/min to 180 °C, 1 min.
Carrier gas	Hydrogen, 34 cm/sec @ 120°C
Sample	2 analytes, at Methylene Chloride
Injection	1 µL, 6:1 split mode
liner	Focus Liner
Injector. temp.	250 °C
Detector t.	FID, 250 °C, H2-30ml/min, Air- 300ml/min, Make Up – Air 30ml/min

Analyte

1. Toluene 40ppm.
2. Chlorobenzene 50ppm.