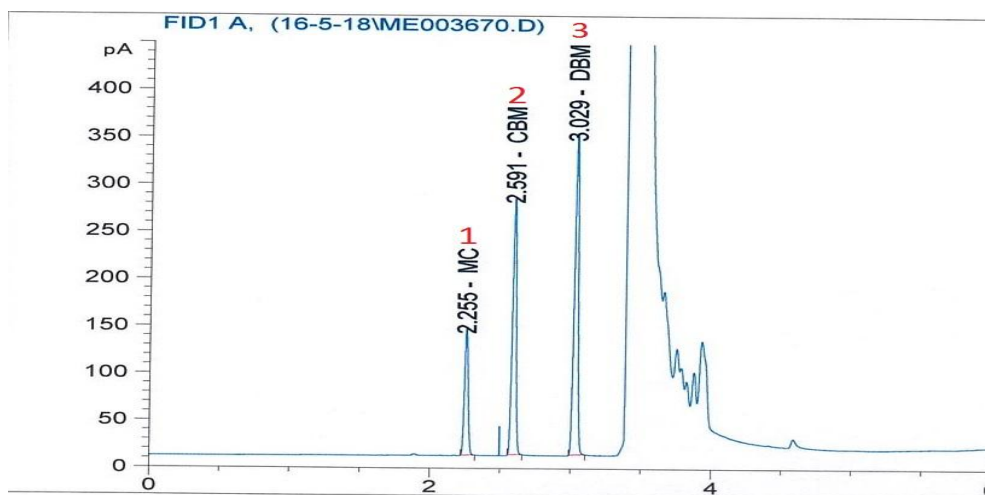


# GC Volatiles Analysis Using UCS1000 Direct Injection



## Application Conditions

GC Model	Sion G4210N
Hydrogen Generator	Sion H-300
UCS	Sion UCS1000
Air Generator	Sion A-100
Column	Quadrex 007-1 30m x 530µm x 3.0 µm
Oven	90 °C (1 min), 30 °C/min to 240 °C.
Carrier gas	Hydrogen, 31 cm/sec @ 90°C constant flow
Sample	3 analytes, at Toluene
Injection	1 µL, 4:1 split mode
liner	Focus Liner
Injector. temp.	220 °C
Detector t.	FID, 250 °C, H2-30ml/min, Air- 300ml/min, Make Up – Air 30ml/min

## Analyte

1. Methylene chloride
2. Chlorobromomethane
3. Dibromomethane