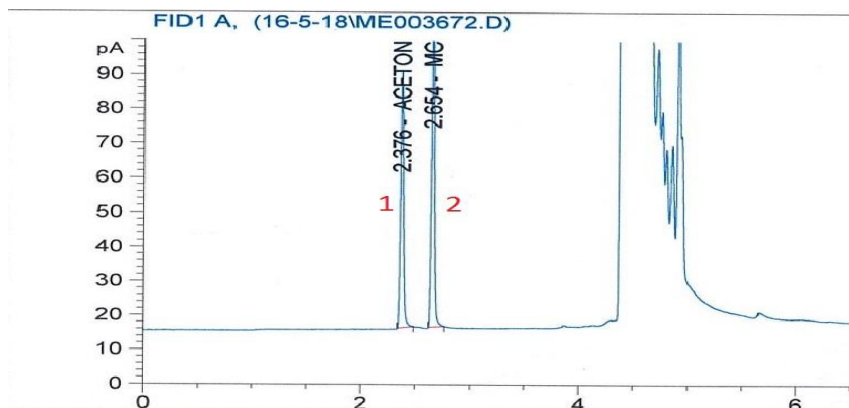


GC Volatiles Analysis Using UCS1000 Direct Injection



Application Conditions

GC Model	Sion G4210N
Hydrogen Generator	Sion H-300
UCS	Sion UCS1000
Air Generator	Sion A-100
Column	Quadrex 007-1 30m x 530µm x 3.0 µm
Oven	50 °C (1 min), 30 °C/min to 185 °C, 1min.
Carrier gas	Hydrogen, 30 cm/sec @ 50°C constant flow
Sample	2 analytes, at Toluene
Injection	1 µL, 5:1 split mode
liner	Focus Liner
Injector. temp.	230 °C
Detector t.	FID, 250 °C, H2-30ml/min, Air- 300ml/min, Make Up – Air 30ml/min

Analyte

1. Acetone
2. Methylene chlorid