

SiChrom

Advanced Chromatography Software From Chromatography Specialists

SiChrom is an advanced chromatography data station with software modules for data acquisition, data processing, and instrument control.

Main Benefits:

- Easy to install and use
- Direct control of Sion 4210N GC, 5210A & 6210A Auto-Samplers
- Modules for specific calculation and methodology
- Tools for regulated environment
- Extended user support
- Competitive pricing



SiChrom Station – simple and effective

Quick start: Users can start working immediately without extensive training. SiChrom's clear structure and intuitive graphical user Interface provide easy access to all frequently performed tasks.

Connectivity: SiChrom can easily be integrated into the existing workflow of any laboratory. Use the Export and Import functions or LIMS to exchange data with third party software.

Customizable user interface: SiChrom can be tailored to meet specific user needs. Each user may customize his/her desktop settings, format tables to meet specific requirements, or even create columns for customized calculations.

Simply powerful: Behind the natural, intuitive interface are highly responsive algorithms with a curve smoothing option that enables users to detect hundreds of peaks in each chromatogram. The integration of peaks can be further fine-tuned by more than 30 integration parameters. A variety of quantification and calibration methods are incorporated in the data module.

Customizable computations: SiChrom's optional extensions provide powerful features that enable implementation of specific methodologies. SiChrom was developed in cooperation with its users; **we understand the many and varied needs of chromatographers. SiChrom meets those needs.**

SiChrom Station – scalability

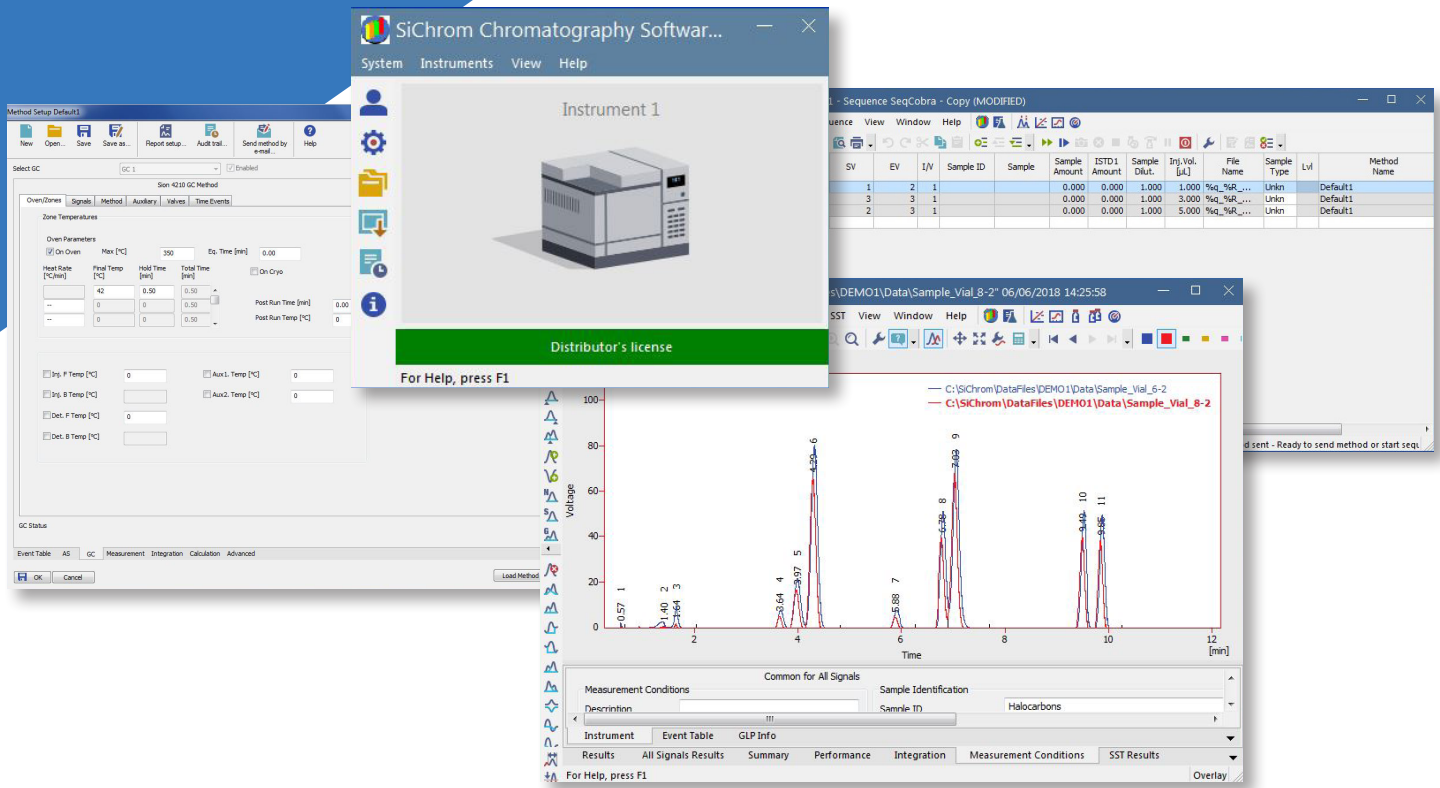
Modular configurations: It is easy to configure a simple solution for a small laboratory with a single chromatograph. When your company expands or needs to change, SiChrom can grow with you, into a complex solution with multiple chromatographs operating in a regulated environment.

Simple and economic solution for small laboratories: Small laboratories can benefit from an inexpensive chromatographic solution with an intuitive user interface without the need for extensive training or complicated initial settings. Users with specific demands can easily incorporate the advanced features and customize the software to meet their specific requirements.

Comprehensive solution for demanding chromatography applications: Larger laboratories usually have three main requirements - efficiency, clear organization of workflow, and data sharing. SiChrom can easily address all these requirements with number of tools.

Automation: SiChrom enables sequences, batch processing, automated actions triggered from the event table, etc.

Regulated environment: Tools for GLP (such as user accounts, audit trails for system, methods and parameters of directly controlled instruments); and integration, import and export to multiple formats, LIMS, etc.).



SiChrom features include data acquisition, direct control of GCs, and auto samplers using Controls; access to advanced analyses through Extensions; and support of 21 CFR Part 11. This all makes SiChrom suitable for laboratories with high demands on efficiency, high sample throughput and GLP standards.

SiChrom Offline: The offline version allows users to evaluate data and prepare methods. This version cannot acquire data, but it can share data or even directly access (through LAN) projects of the two above-described stations. With SiChrom Offline users can work with acquired data on additional computers in the lab or at home.

Validation: Software tools for seamless Operational Qualification for both analog and digital data detectors are integral part of SiChrom Chromatography software.

Analog detectors also require a precise peak generator (Validator) that is included in the Validation Kit that can be also used for 3rd party chromatography softwares.

SiChrom Enhancements

SiChrom product line can be further supplemented by Extensions, Controls and Hardware.

SiChrom SST Extension: Software module that enhance the capabilities of SiChrom data station. SST extension allows monitoring the accurate function of the chromatography systems.

SiChrom Controls: Software modules that provide an interface with chromatography devices such as Sion's 4210N GC and 5210A & 6210A Autosampler, as well as valves. Direct control allows the device(s) to be controlled and monitored from the SiChrom environment. The instrument method that controls the device is saved in the measured chromatograms.

A list of currently controlled devices is available at www.sion-tech.com.

SiChrom Station – extended user support

Lifetime support, free of charge: SiChrom not only means “software”; it also comes with extensive free support from Sion Technologies and our partners. Unlike many large corporations, Sion Technologies is in close contact with its users. Not only do we provide support, but we also consider the suggestions, comments and concerns of our customers the kind of valuable input we need for the further and future development of SiChrom.

Regular updates: Regular update releases are free of charge. These minor updates result from our ongoing dialog with customers. They not only fix small problems, but also add enhancements that make Working with SiChrom much more convenient. SiChrom software can be set to automatically check for available updates.

Try before you buy: A free SiChrom demo is available for download so you can explore the features available. The demo includes all features of the SiChrom software using sample data.

A time limited SiChrom Trial, using your own actual data, is offered for those who want to evaluate the software in real work.

Pre-sales consultations are available for those who have not yet purchased SiChrom.

Contact us:

sion@sion-tech.com
www.sion-tech.com
Tel: 972-4-8438992



Unique laboratory solutions, easy to use, efficient and cost-effective.